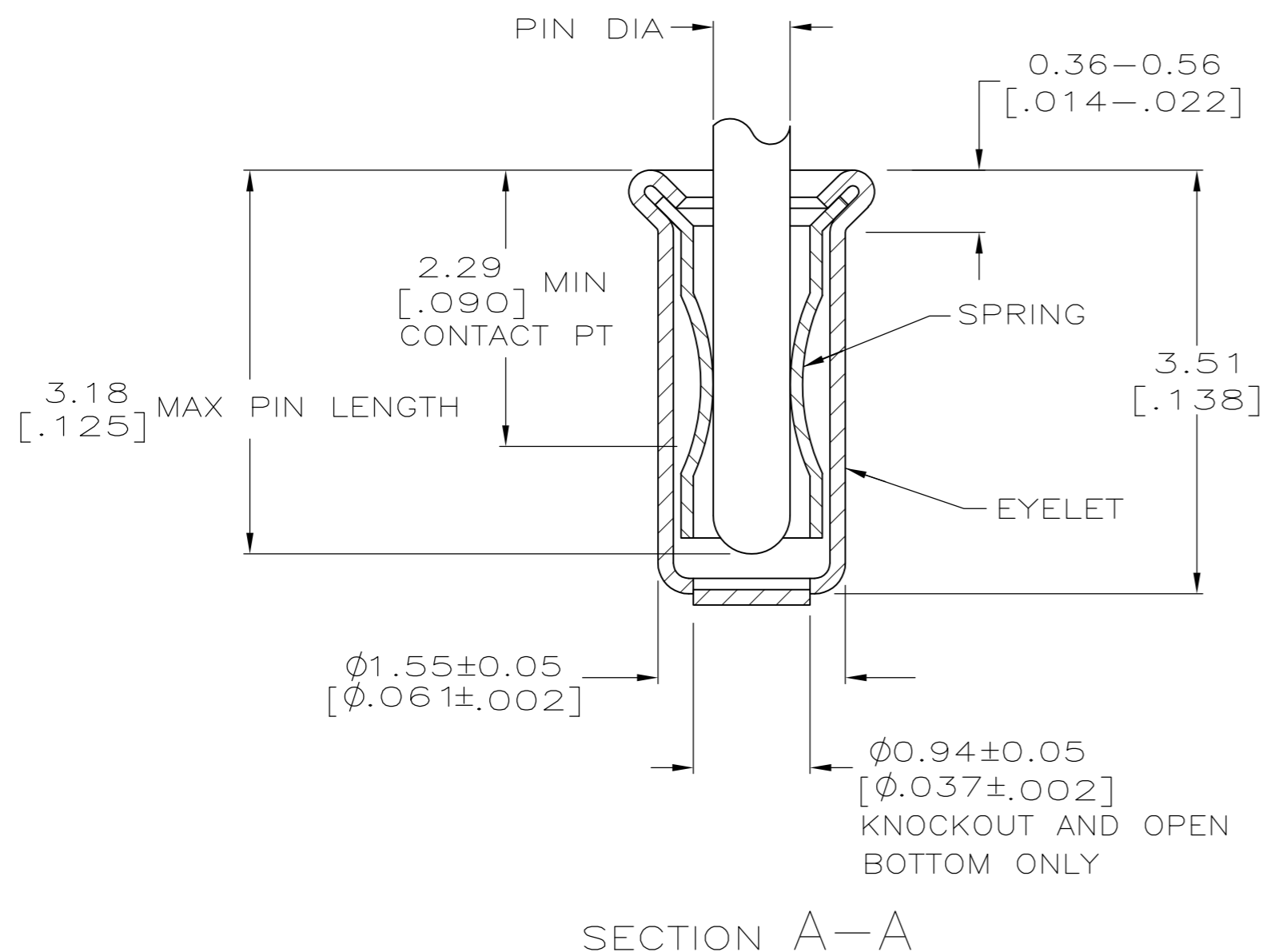
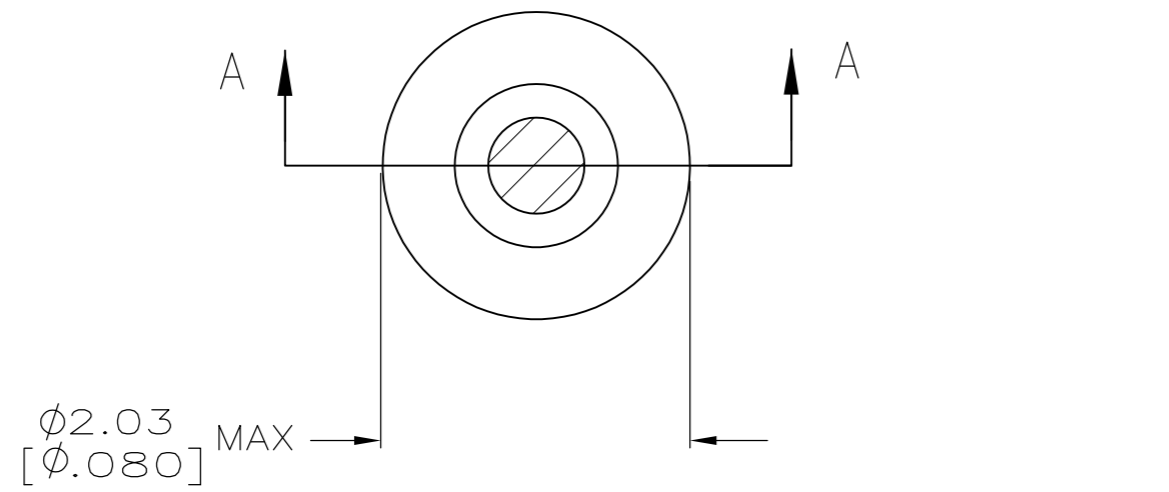


THIS DRAWING IS UNPUBLISHED. RELEASED FOR PUBLICATION
 © COPYRIGHT - By - ALL RIGHTS RESERVED.

| LOC | | DIST | | REVISIONS | | | |
|-----|-----|-------------|---------------------------|-----------|-----|------|--|
| P | LTR | DESCRIPTION | | DATE | DWN | APVD | |
| GP | 00 | AR4 | REVISED PER ECO-11-004835 | 11MAR11 | RK | HMR | |



- 1. TIN PER MIL-T-10727 OR TIN LEAD 0.00254 [.000100] MIN THK.
- 2. GOLD PER MIL-G-45204, TYPE II, 0.00076 [.000030] MIN THK OVER NICKEL PER QQ-N-290 0.00028 [.000011] MIN THK ON CONTACT AREA.
- 3. GOLD FLASH PER MIL-G-45204, TYPE II, 0.13 μm [.000005] MIN THK. OVER NICKEL PLATE PER QQ-N-290 0.51 μm-1.52 μm [.000020-.000060] EXT THK.
- 4. TIN PER MIL-T-10727 OR TIN LEAD 0.00381 [.000150] MIN THK.
- 5. RECOMMENDED HOLE SIZE, PLATED OR UNPLATED:
 MACHINE INSERTION: 1.57 ^{+0.10}/_{-0.08} [.062 ^{+0.004}/_{-0.003}]
 HAND INSERTION: 1.60 ^{+0.10}/_{-0.00} [.063 ^{+0.004}/_{-0.000}]
- 6. APPLICATION TOOL PART NUMBER: MACHINE NO. 682127-4
 INSERTION HEAD NO. 682039-3
- 7. TO INSURE PROPER SPRING TENSION DO NOT EXCEED A 0.05 [.002] DIFFERENCE IN PIN DIA WHEN CHANGING TO A SMALLER PIN.
- 8. BOTTOM PLUG KNOCKOUT TOOL PART NUMBER 69729 WITH TIP PART NUMBER 69728-1.
- 9. TIN PER ASTM B 545, 0.00254 [.000100] MIN THK.

- 10 MATERIAL: SPRING COPPER QQ-C-533 EYELET: COPPER QQ-C-576
- 11 OBSOLETE PARTS: OBSOLETE CIS STREAMLINING PER D.RENAUD/D.SINISI

| 9 | CLOSED | 0.76-0.84 [.030-.033] | TIN 9 | TIN 9 | 8-331677-3 |
|-------------|-------------|-----------------------|--------|--------|------------|
| | OPEN | 0.76-0.84 [.030-.033] | TIN 4 | GOLD 2 | 7-331677-4 |
| OBSOLETE | | 0.76-0.84 [.030-.033] | TIN 1 | | 7-331677-3 |
| OBSOLETE | | | | | 7-331677-1 |
| OBSOLETE | CLOSED | 0.66-0.74 [.026-.029] | | GOLD 2 | 3-331677-8 |
| OBSOLETE | | 0.56-0.64 [.022-.025] | TIN 1 | TIN 1 | 3-331677-7 |
| OBSOLETE | KNOCKOUT | 0.76-0.84 [.030-.033] | | | 3-331677-5 |
| OBSOLETE | | 0.66-0.74 [.026-.029] | | | 3-331677-4 |
| OBSOLETE | | 0.76-0.84 [.030-.033] | GOLD 3 | GOLD 2 | 3-331677-2 |
| OBSOLETE | | 0.66-0.74 [.026-.029] | | | 3-331677-0 |
| 11 OBSOLETE | | 0.76-0.84 [.030-.033] | | | 2-331677-9 |
| | | 0.66-0.74 [.026-.029] | | | 2-331677-7 |
| | | 0.76-0.84 [.030-.033] | | | 2-331677-6 |
| | | 0.66-0.74 [.026-.029] | | | 2-331677-4 |
| | OPEN | | | | 2-331677-3 |
| | | 0.76-0.84 [.030-.033] | TIN 1 | GOLD 2 | 2-331677-2 |
| | | 0.56-0.64 [.022-.025] | | TIN 1 | 2-331677-1 |
| | | 0.76-0.84 [.030-.033] | | GOLD 2 | 2-331677-0 |
| | | 0.56-0.64 [.022-.025] | | TIN 1 | 1-331677-9 |
| | CLOSED | 0.76-0.84 [.030-.033] | | GOLD 2 | 1-331677-8 |
| | | 0.56-0.64 [.022-.025] | GOLD 3 | TIN 1 | 1-331677-7 |
| | | 0.76-0.84 [.030-.033] | TIN 1 | TIN 1 | 1-331677-6 |
| | | 0.56-0.64 [.022-.025] | GOLD 3 | GOLD 2 | 1-331677-4 |
| | | 0.76-0.84 [.030-.033] | TIN 1 | TIN 1 | 1-331677-3 |
| | | 0.66-0.74 [.026-.029] | GOLD 3 | GOLD 2 | 1-331677-1 |
| | | 0.66-0.74 [.026-.029] | TIN 1 | TIN 1 | 1-331677-0 |
| | BOTTOM TYPE | RECOMMENDED PIN DIA | EYELET | SPRING | PART NO |

THIS DRAWING IS A CONTROLLED DOCUMENT. DWN R. TALLEY 4-5-91
 CHK -
 APVD -

| | | | |
|-------------------------|--|------------------|---|
| DIMENSIONS: mm [INCHES] | TOLERANCES UNLESS OTHERWISE SPECIFIED: | PRODUCT SPEC | NAME |
| 0 PLC ± - | 1 PLC ± - | APPLICATION SPEC | MINIATURE SPRING SOCKRT ASSEMBLY |
| 2 PLC ± - | 3 PLC ± 0.20 [.008] | | |
| 4 PLC ± - | ANGLES ± - | WEIGHT | SIZE CAGE CODE DRAWING NO RESTRICTED TO |
| MATERIAL | FINISH | | A2 00779 C=331677 |
| | | CUSTOMER DRAWING | SCALE 1:1 SHEET 1 OF 1 REV AR4 |

TE Connectivity